



EASY WEASEL™ MOBILITY

3G | 4G | LTE ACCESSPOINT & TRAVEL ROUTER

Quick Installation Guide

IMPORTANT USAGE INSTRUCTION

For the convenience of use, this product accepts power from a desktop or a laptop computer. It's mandatory to connect both of two USB connectors at one end of USB supplied power cable to computer at one time. Power supply is not sufficient for the device to operate normally if only one USB connector is inserted into the computer. In this scenario it might cause temporary malfunction on the computer.



LED indicators

	LED color	Description
USB LED	Blue	3G/3.5G is on
	Blue in flash	Data access
Wi-Fi LED	Blue	WLAN is on
	Blue in flash	Data access
	Blue in fast flash	Device is in WPS mode

Installation Steps



DO NOT switch on WiFi Mobile Router before performing the installation steps below.

Step 1.

Turn off the power switch and then plug USB 3G Modem to the Router.

Note: The WiFi Mobile Router is designed to work with either UMTS or EV-DO and even HSPA 3G modem. Please refer to your service provider for detailed feature information.

Step 2.

Plug your USB modem which is with activated USB dongle.

Step 3.

You can choose either Power Adapter or USB Cable for power supply.

3.1. Use Power Adapter

Connect with the power adapter to the receptor on the back panel of it.

3.2. Use USB cable

Connect USB Cable to the same place of it.

Step 4.

4.1. Use Power Adapter

Then plug the other end of the power adapter into a wall outlet.

4.2. Use USB Cable

Then plug the other end of USB Cable to USB port on your PC or NB.

Step 5.

Turn on the power switch.



The Wi-Fi and 3G LEDs will turn ON to indicate that the power has been applied.

Getting Started with Easy Setup Utility

We provide Wizard and Easy Setup by Windows Utility to enable you to set up the WiFi Mobile Router quickly and easily.



Check the steps below before running the section.

- (1) Press WPS button more than 6 seconds on the Router. The Router will reset to default.
- (2) Connect to the Router by Wi-Fi. The default SSID is the same as “Mac Address”
- (3) Insert CD to CD-ROM, Click the Easy Setup Utility from CD or Auto Run.

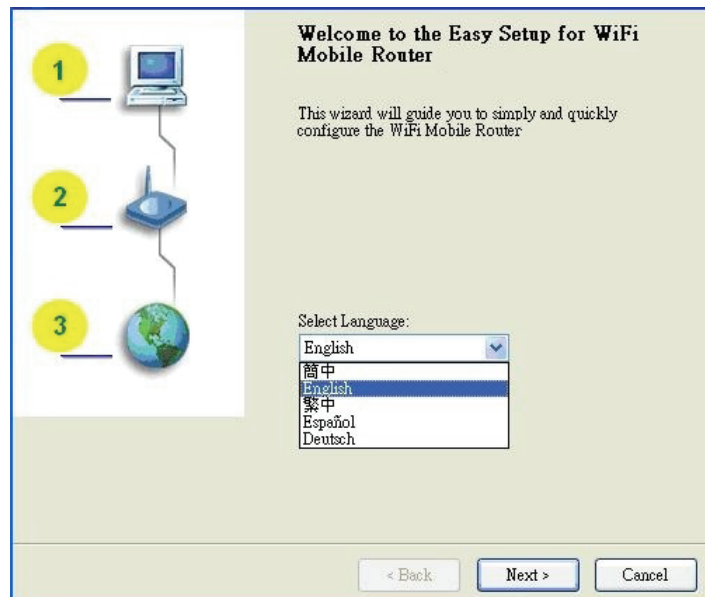
Step 1.

You can start to configure the device via the Easy Setup Utility



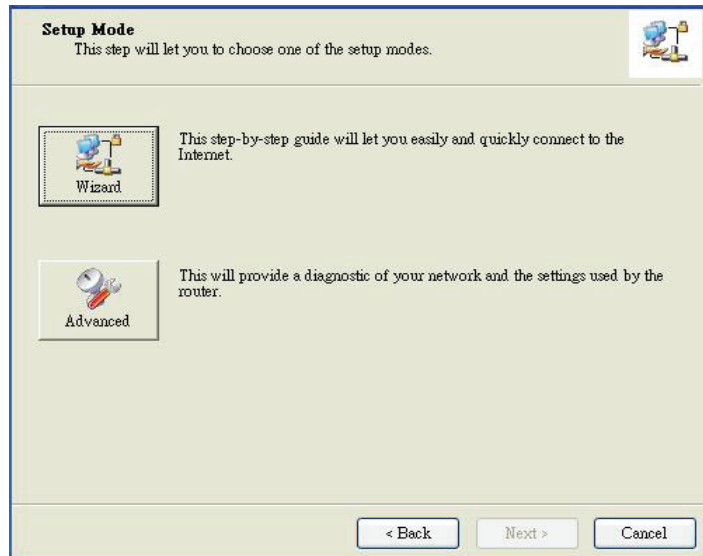
Step 2.

Select language then click “Next” to continue.



Step 3.

1. Please select Wizard mode to run the setup step-by-step to diagnose the network settings of the Router.
2. Click the “Wizard” button and click “NEXT” to continue.



Setup Mode
This step will let you to choose one of the setup modes.

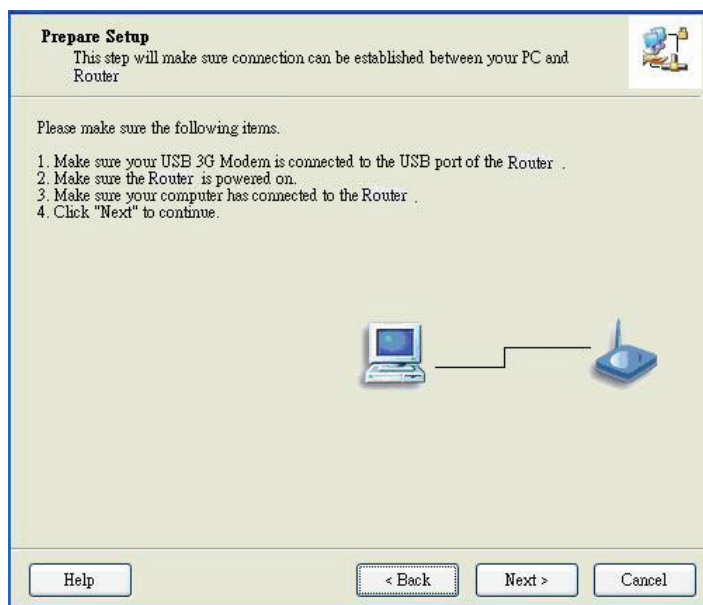
Wizard
This step-by-step guide will let you easily and quickly connect to the Internet.

Advanced
This will provide a diagnostic of your network and the settings used by the router.

< Back Next > Cancel

Step 4.

1. Make sure your USB 3G Modem is connected to the USB port of the Router.
2. Make sure the Router is powered on.
3. Make sure your computer has connected to the Router.
4. Make sure your computer has an IP address.
5. Click “Next” to continue.



Prepare Setup
This step will make sure connection can be established between your PC and Router

Please make sure the following items.

1. Make sure your USB 3G Modem is connected to the USB port of the Router .
2. Make sure the Router is powered on.
3. Make sure your computer has connected to the Router .
4. Click "Next" to continue.

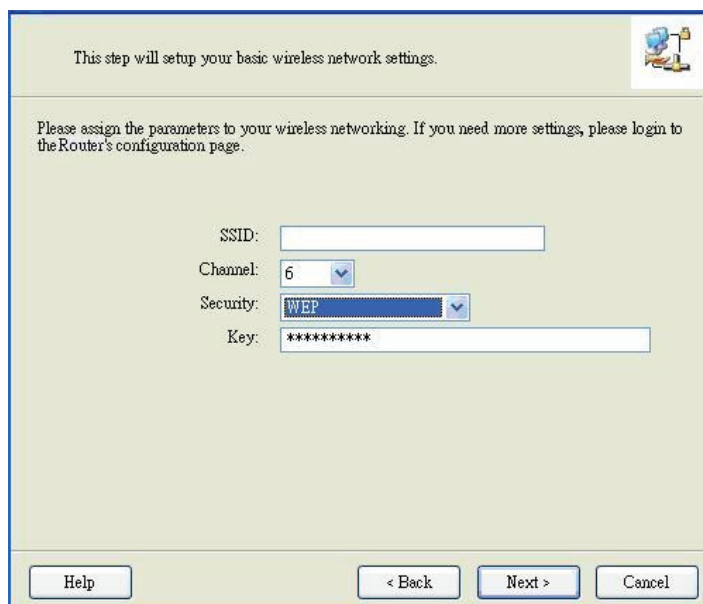
Help < Back Next > Cancel

Step 5.

1. Key in the SSID, Channel and Security options, for example:
SSID: “WiFi Mobile Router”,
Security: WEP
Key: “1234567890”.

Default SSID is the same as “Mac Address”

2. And then click “Next” to continue.



This step will setup your basic wireless network settings.

Please assign the parameters to your wireless networking. If you need more settings, please login to the Router's configuration page.

SSID:

Channel:

Security:

Key:

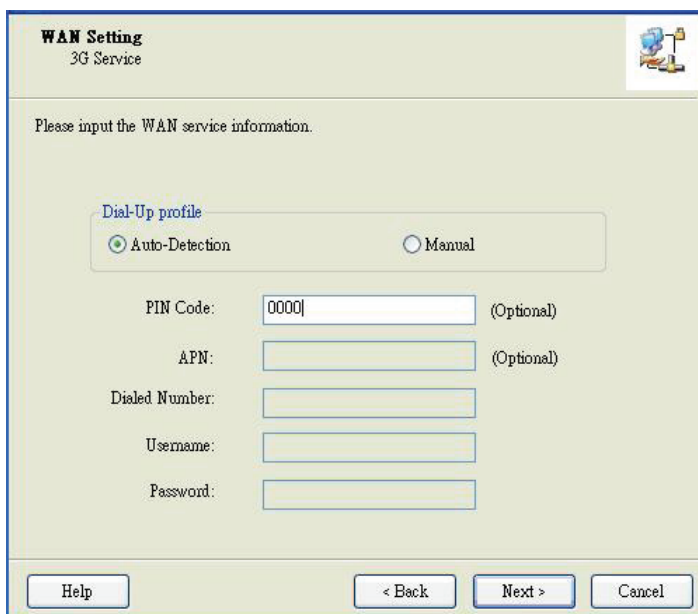
Help < Back Next > Cancel

Step 6-1.

Select "Auto-Detection", and the Utility will try to detect and configure the required 3G service settings automatically.

Click "Next" to continue.

Default PIN Code is empty, if you have PIN Code, you must enter it. For example "0000". If no, just Click "Next" to continue.



WAN Setting
3G Service

Please input the WAN service information.

Dial-Up profile
 Auto-Detection Manual

PIN Code: 0000 (Optional)

APN: (Optional)

Dialed Number:

Username:

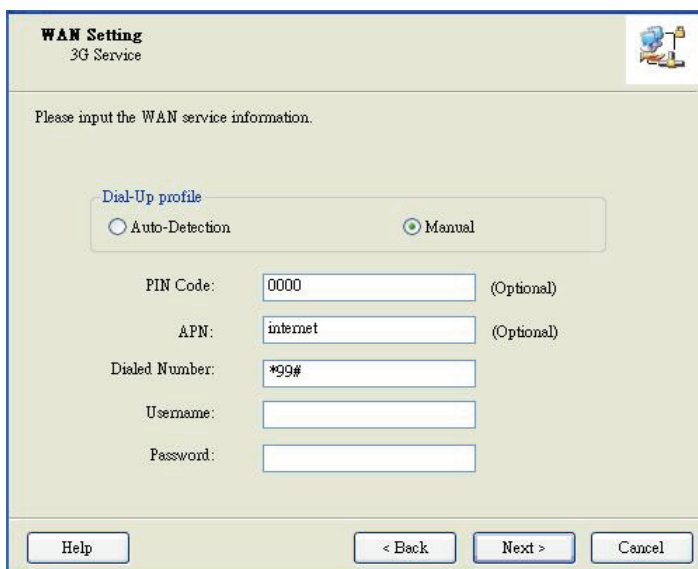
Password:

Help < Back Next > Cancel

Step 6-2.

Or you can select "Manual" and manually fill in the required 3G service settings provided by your ISP.

Click "Next" to continue.



WAN Setting
3G Service

Please input the WAN service information.

Dial-Up profile
 Auto-Detection Manual

PIN Code: 0000 (Optional)

APN: internet (Optional)

Dialed Number: *99#

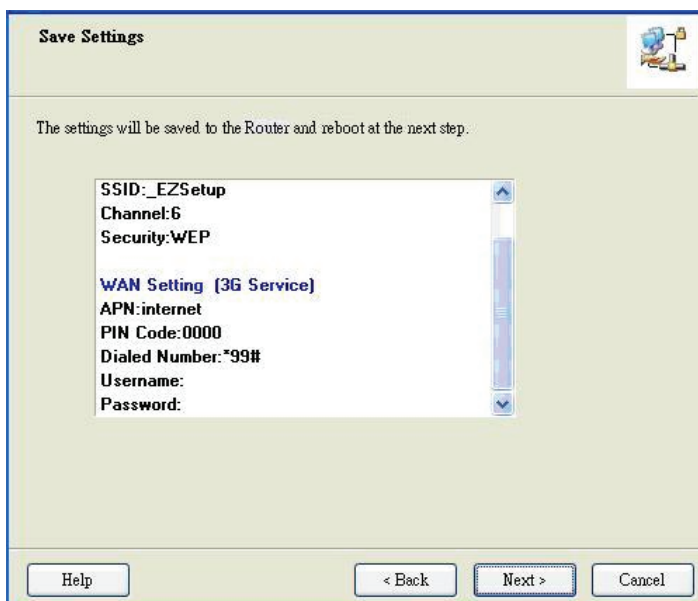
Username:

Password:

Help < Back Next > Cancel

Step 7.

Check the settings, and then click the "Next" if the settings are correct.



Save Settings

The settings will be saved to the Router and reboot at the next step.

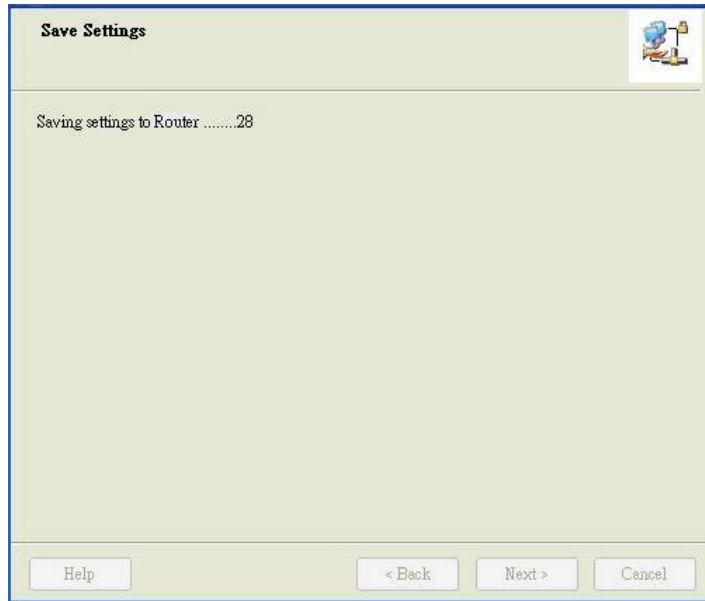
SSID:_EZSetup
Channel:6
Security:WEP

WAN Setting (3G Service)
APN:internet
PIN Code:0000
Dialed Number:*99#
Username:
Password:

Help < Back Next > Cancel

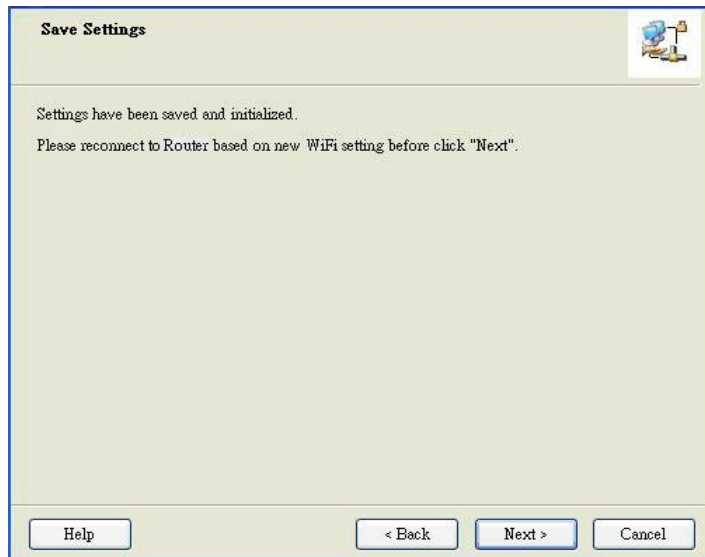
Step 8.

The WiFi Mobile Router is rebooting to make your entire configuration activated.



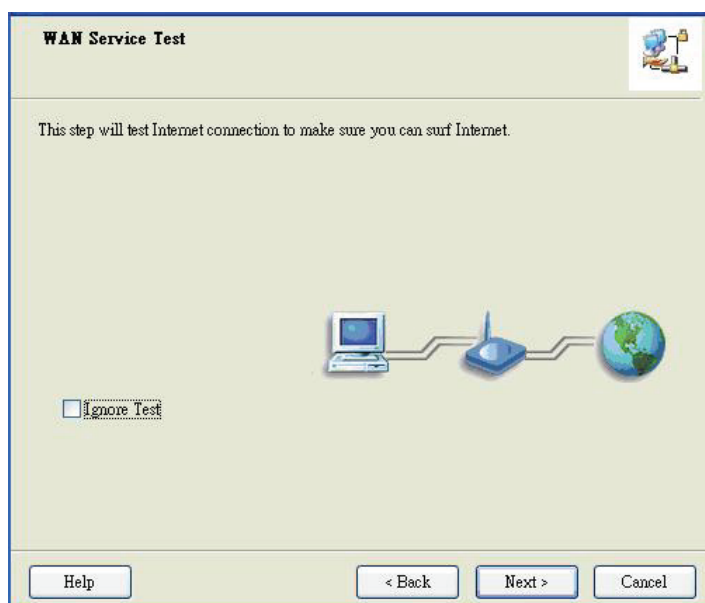
Step 9.

Please reconnect to Router before click "Next".



Step 10-1.

Click "Next" to test the Internet connection or you can skip test. And then click "Next" to continue.



Step 10-2.

Test the Internet connection



Step 11.

Congratulations!

Setup is completed.

Now you have already connect to Internet successfully.

